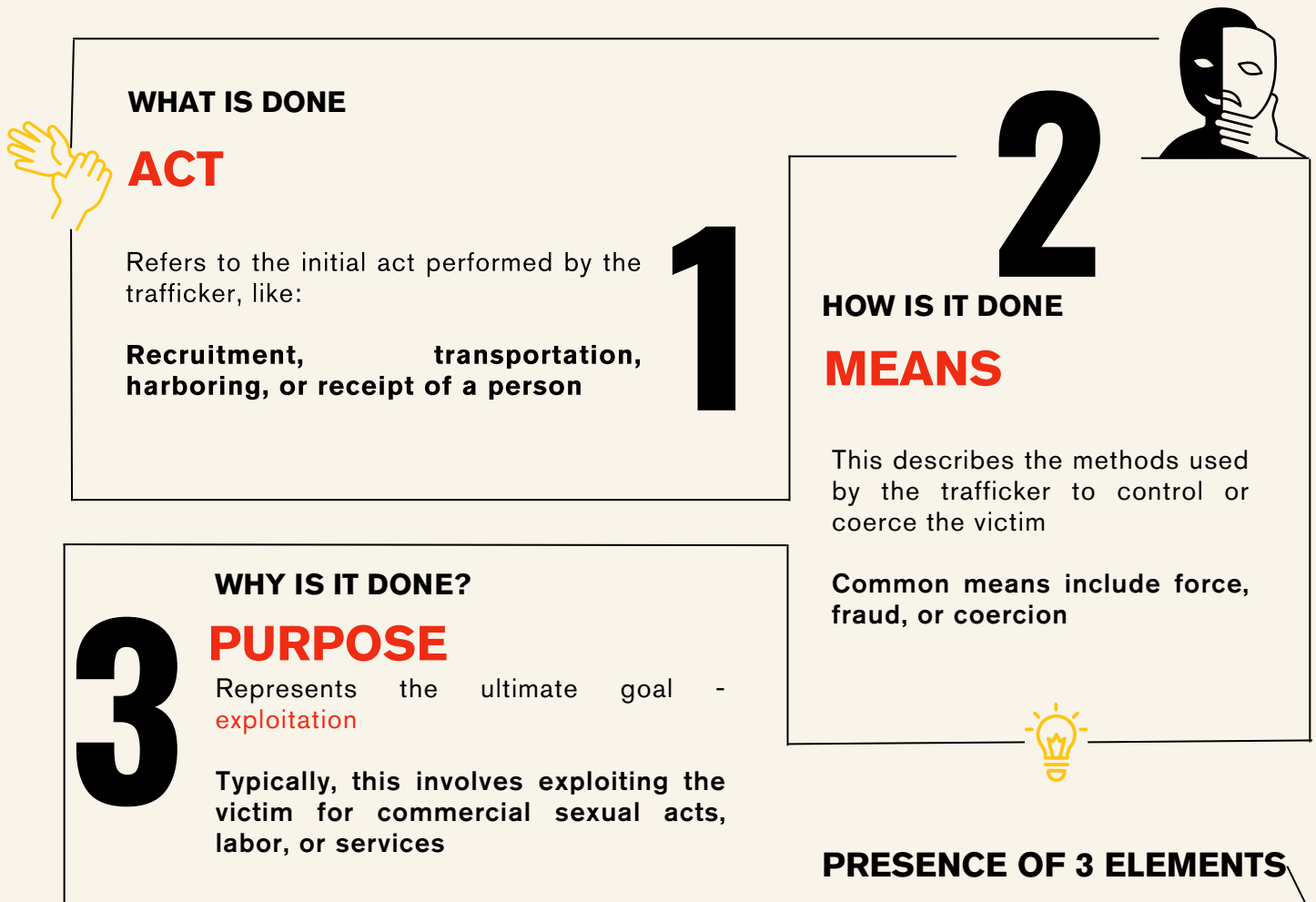


# The AMP Model

The AMP Model is a widely recognized framework used to identify and define human trafficking situations. You can use that tool, to understand if identified issue is a human trafficking case



## WHY AMP IS IMPORTANT?

✓ All elements (Act + Means + Purpose) must be present for a situation to be legally defined as human trafficking, except when the victim is a child — In most countries, when the victim is a child, the 'Means' element is not required to legally establish a situation of child trafficking. However, in some countries, the 'Means' is waived only in cases of child sex trafficking, but still required to prove child labour trafficking.

- It provides a clear legal standard based on the international law, adopted by over 170 countries.
- It helps differentiate human trafficking from other crimes like smuggling or labor exploitation.
- It guides social workers, humanitarian actors, law enforcement and the justice sector, in identifying trafficking victims.

SCAN ME



Learn more at <https://www.antitraffickingresponse.org>